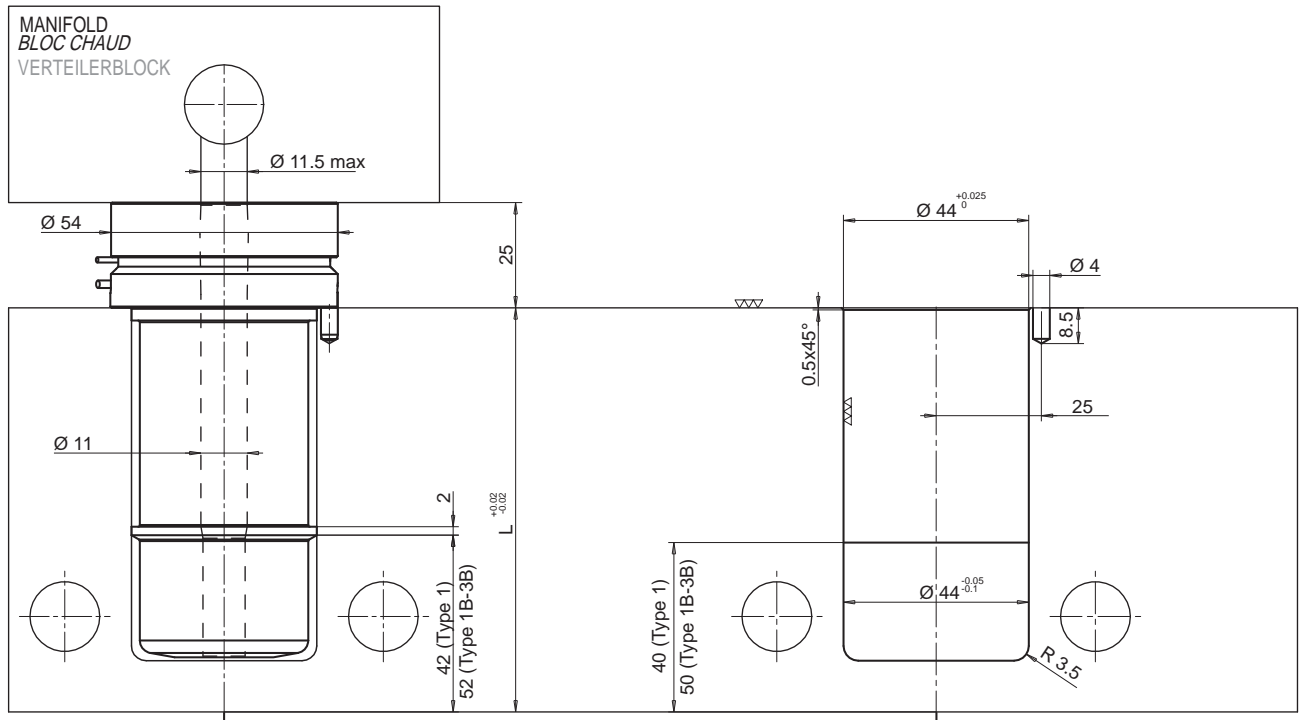


NEW

DN Ø44

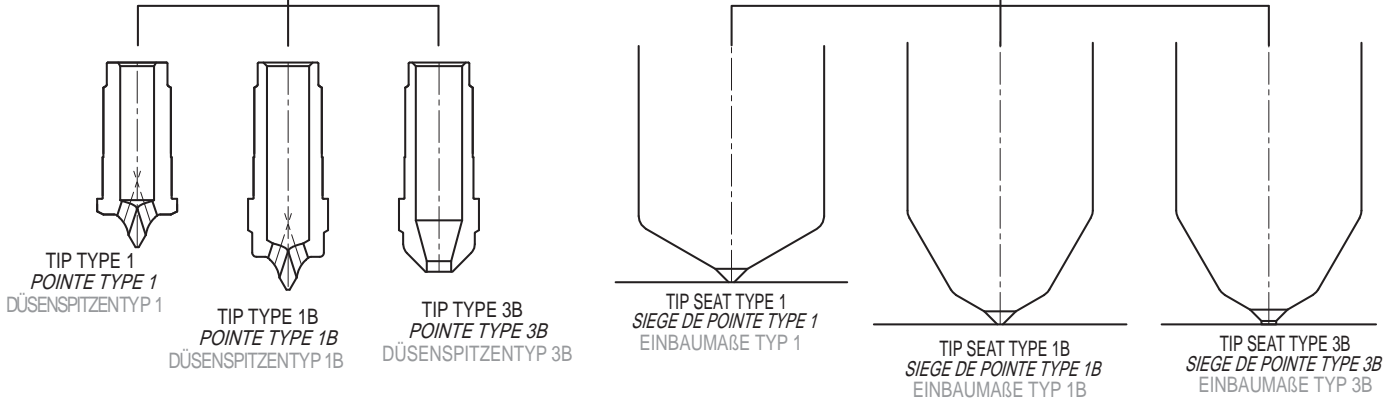
NOZZLE - BUSE - DÜSE

**NOZZLE TYPE "D" with SCREWED TIP Ø 44**  
**TYPE BUSE "D" avec POINTE VISSÉE Ø 44**  
**DÜSENSPITZENTYPE "D" mit AUSWECHSELBARER DÜSENSPITZE Ø 44**



NOZZLE  
BUSE  
DÜSE

NOZZLE SEAT  
SIEGE DE BUSE  
DÜSENEINBAUMAßE

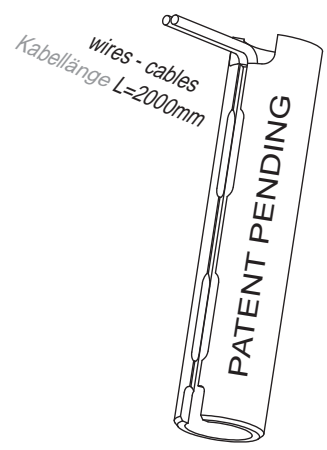


**HEATER AND THERMOCOUPLE / RESISTANCE ET THERMOCOUPLE**  
**HEIZUNG UND THERMOFÜHLER**

Single heater <i>Une seule résistance</i> Einzelheizung	White / Red-White <i>Blanc / Rouge - Blanc</i> Weiss / Rot-Weiss	230 V
Grounded thermocouple J type calibration <i>Thermocouple à la massa calibré type J</i> Geerdeter Thermofühler Typ J	Red / Rouge / Rot	TC+
	Blue / Bleu / Blau	TC-

**Example of order**  
**Exemple de désignation**  
**Bestellbeispiel:**

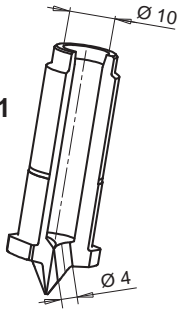
Nozzle Buse Düse	Ø D	Length L Longueur L Länge L	Tip type Type de pointe Düsenspitzen typ
D N	4 4	0 8 6	- - 1



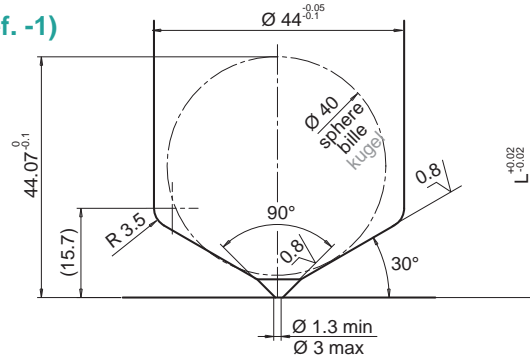
THEMOPLAY  
HERVINGEAT

**TYPE-TYP 1 (Ref. -1)**

Code  
**E17101**



Tip - Pointe - Düsen Spitze



Tip seat - Siege de pointe - Einbaumaße

L	76	86	96	106	116	126	136	146	156	166	176	186	196	206	216	226	236	246	256
---	----	----	----	-----	-----	-----	-----	-----	-----	-----	-----	-----	-----	-----	-----	-----	-----	-----	-----

**COLOUR CHANGE BUSHING**

Available upon request

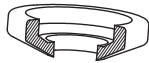
**DOUILLE CHANGE COULEUR**

Disponible sur demande

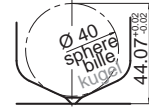
**VORKAMMERBUCHSE FÜR FARBWECHELSEL**

Vorhanden auf Anfrage

Code  
**E17106**

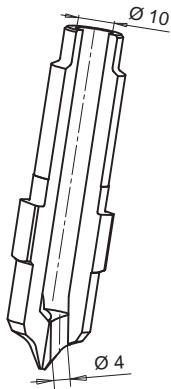


Variation on the seat with colour change bushing  
 Tolérance du siège pour montage avec douille change-couleur  
 Einbaumaße der Vorkammerbuchse für Farbwechsel

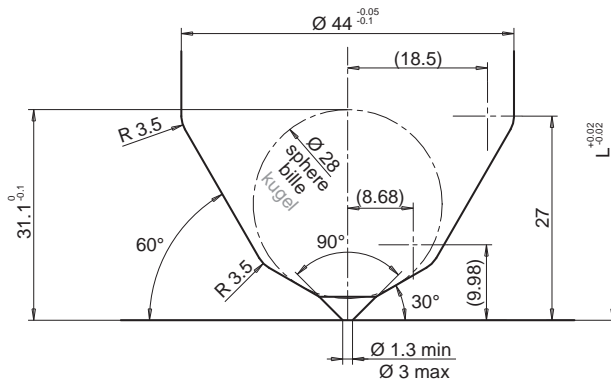


**TYPE-TYP 1B (Ref. -1B)**

Code  
**E17102**



Tip - Pointe - Düsen Spitze

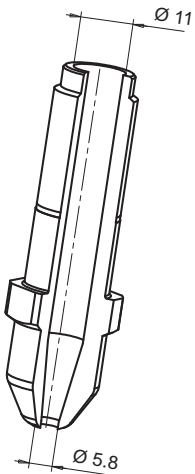


Tip seat - Siege de pointe - Einbaumaße

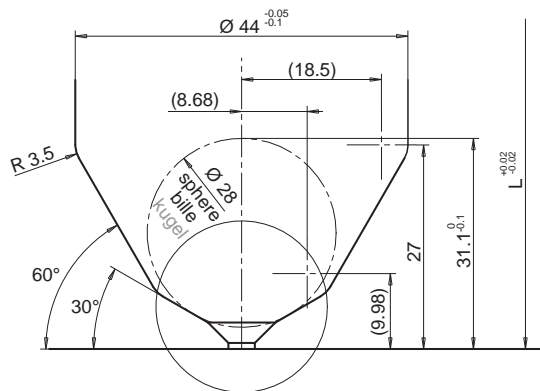
L	86	96	106	116	126	136	146	156	166	176	186	196	206	216	226	236	246	256	266
---	----	----	-----	-----	-----	-----	-----	-----	-----	-----	-----	-----	-----	-----	-----	-----	-----	-----	-----

**TYPE-TYP 3B (Ref. -3B)**

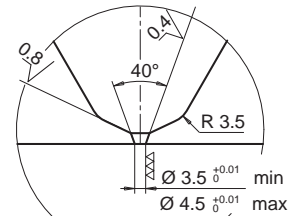
Code  
**E17103**



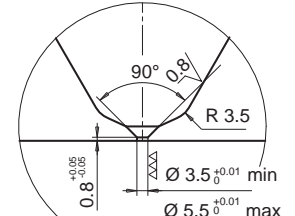
Tip - Pointe - Düsen Spitze



Tip seat - Siege de pointe - Einbaumaße



CONICAL - CONIQUE  
 KONISCH



CYLINDRICAL - CYLINDRIQUE  
 ZYLINDRISCH

L	86	96	106	116	126	136	146	156	166	176	186	196	206	216	226	236	246	256	266
---	----	----	-----	-----	-----	-----	-----	-----	-----	-----	-----	-----	-----	-----	-----	-----	-----	-----	-----

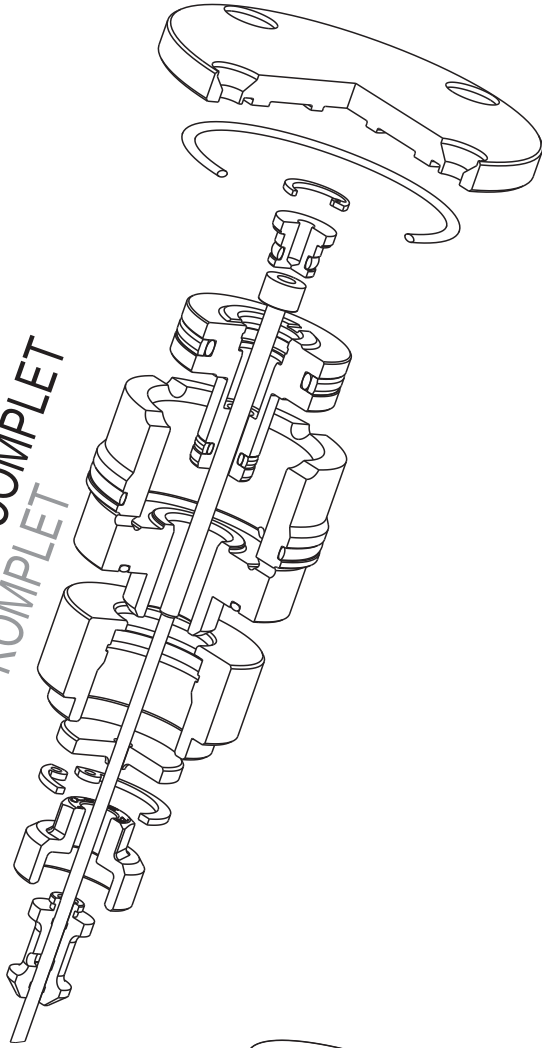
NEW

**BOTH PNEUMATIC AND HYDRAULIC SHUT OFF VALVE  
GROUPE OBTURATION SOIT HYDRAULIQUE QUE PNEUMATIQUE**

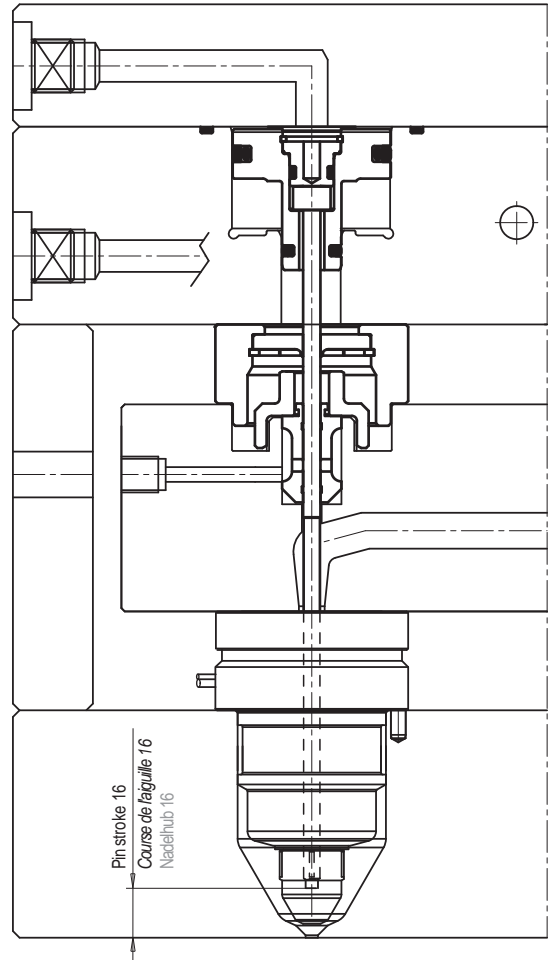
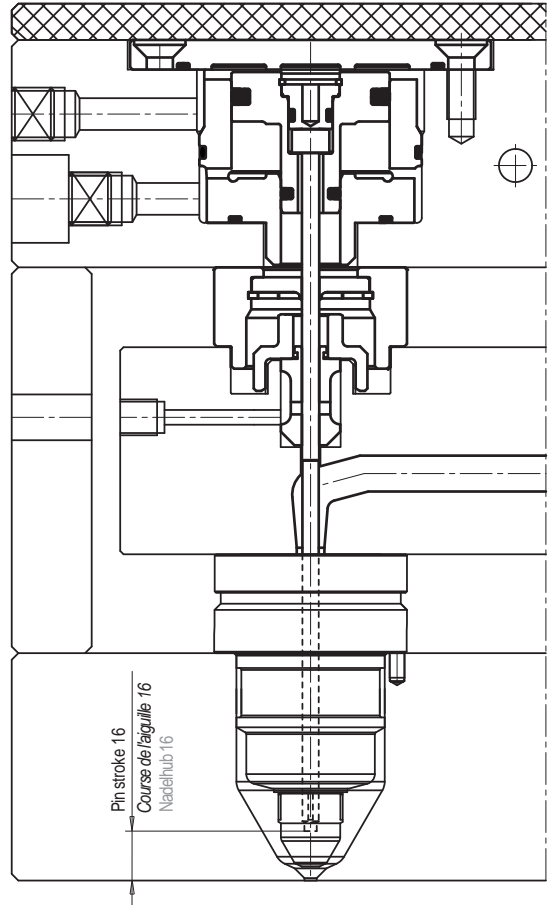
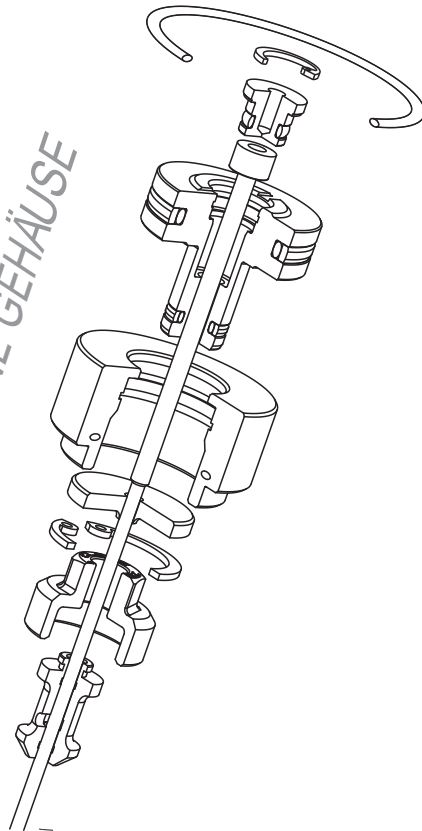
**NADELVERSCHLÖSSYSTEM, GEEIGNET FÜR PNEUMATISCHE - UND HYDRAULISCHE BETÄTIGUNG**

FOR NOZZLE TYPE 3B Ø 44- POUR BUSES TYPE 3B Ø 44- FÜR DÜSENTYP 3B Ø 44

**E17231  
COMPLETE-COMPLET  
KOMPLET**



**E17232  
WITHOUT BODY  
SANS CORPS / OHNE GEHÄUSE**

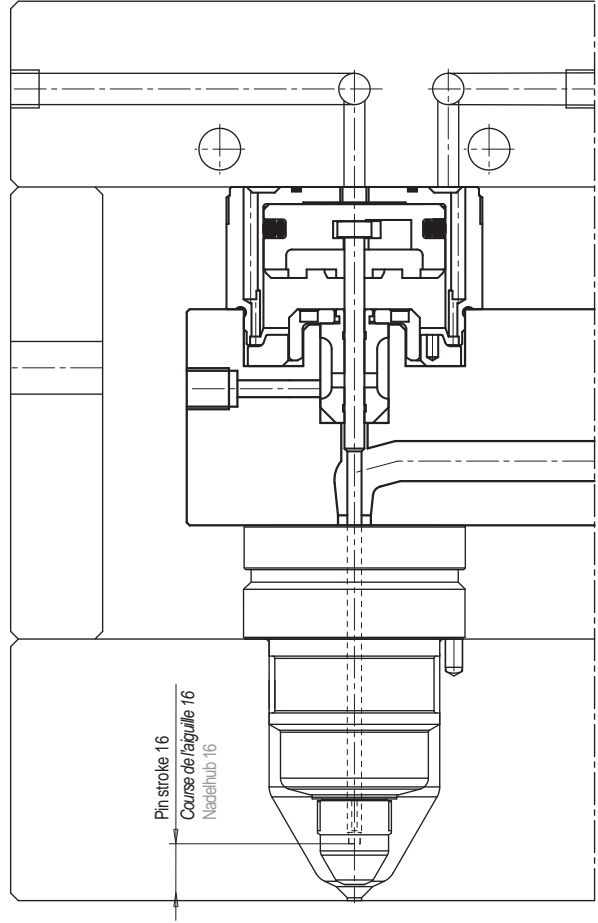
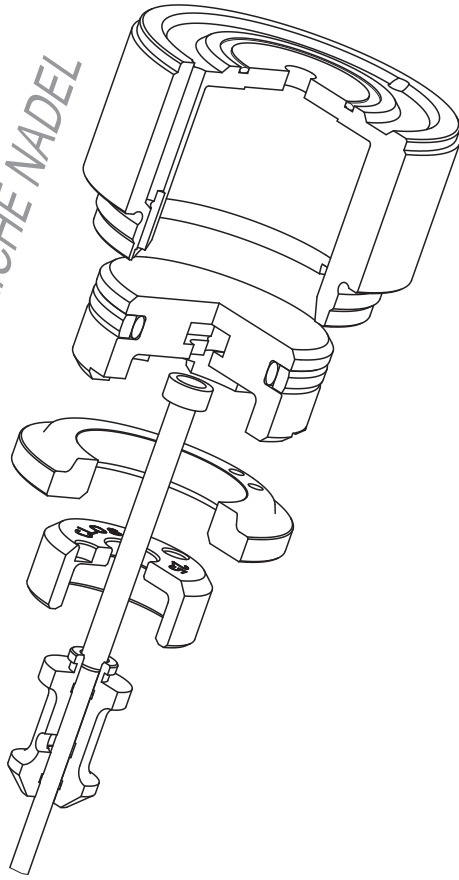


**PNEUMATIC SHUT OFF VALVE  
GROUPE OBTURATION PNEUMATIQUE**

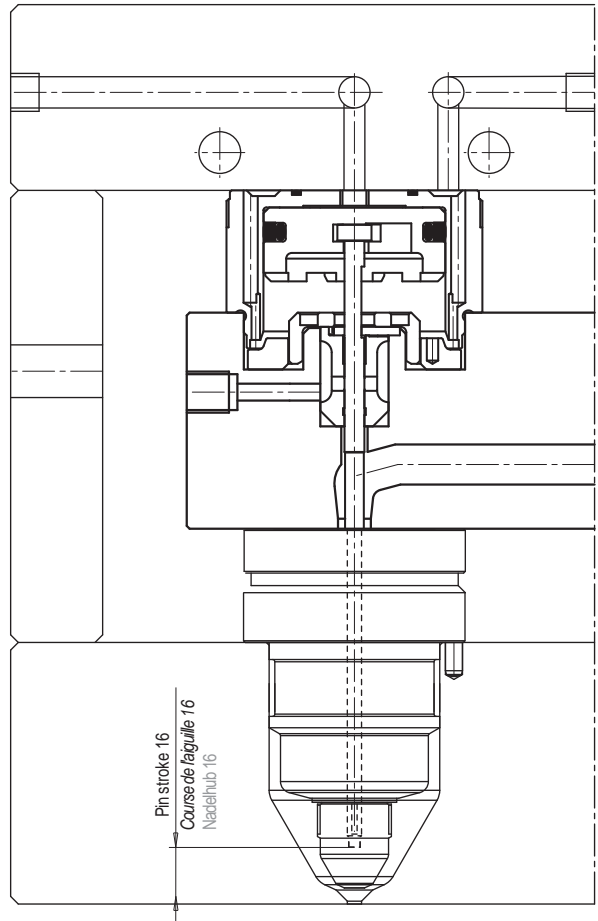
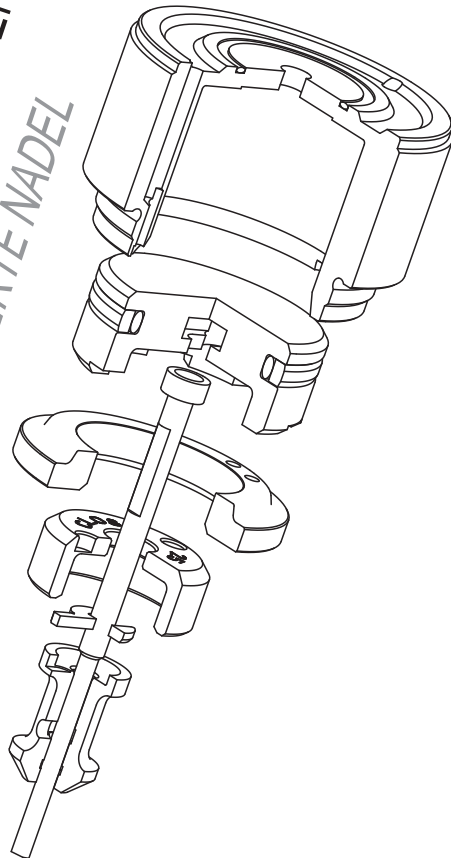
**NADELVERSCHLÜßSYSTEM, GEEIGNET FÜR PNEUMATISCHE BETÄTIGUNG**

**NEW**

**E17237**  
**STANDARD NEEDLE**  
**AIGUILLE LIBRE - BEWEGLICHE NADEL**



**E17238**  
**ORIENTED NEEDLE - AIGUILLE ORIENTÉE**  
**ORIENTIERTE NADEL**



**FOR NOZZLE TYPE 3B Ø44- POUR BUSES TYPE 3B Ø 44- FÜR DÜSENTYP 3B Ø 44**

**THERMOPLAY®**  
**REPAIRKIT**

10/2007