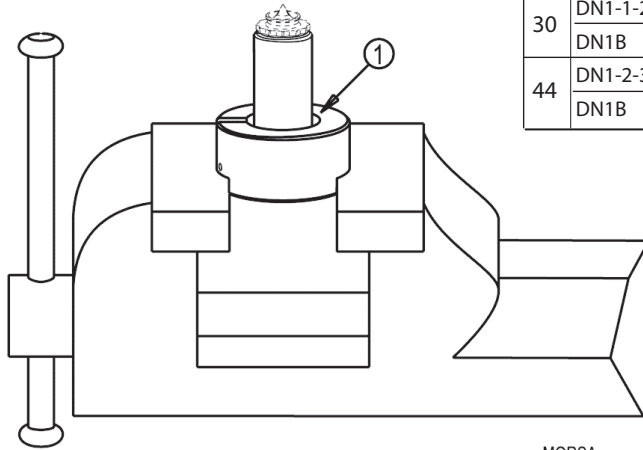
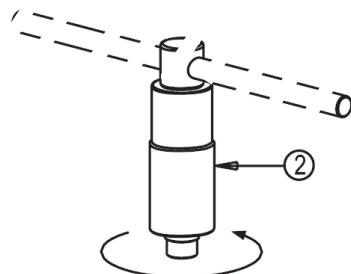




ACCESSORIES FOR NOZZLES FN AND DN / ACCESSORI PER UGELLI FN e DN

1 DISASSEMBLY TOOL FOR NOZZLES
ATTREZZO SMONTAGGIO UGELLI

Nozzles Ugelli	Code Codice
FØ 11	E06800
DNØ 18	E17814
DNØ 22	E17815
DNØ 30	E17816
DNØ 44	E17817
FØ 16	E15297
FØ 24	E15298
FØ 32	E15299
FØ 46	E15300
FNHØ 16	E19441
FNHØ 24	E19442
FNHØ 32	E19443
FNHØ 46-60	E19444



2 DISASSEMBLY TOOL FOR NOZZLE TIP
CHIAVE A BUSSOLA PER SMONTAGGIO PUNTALI

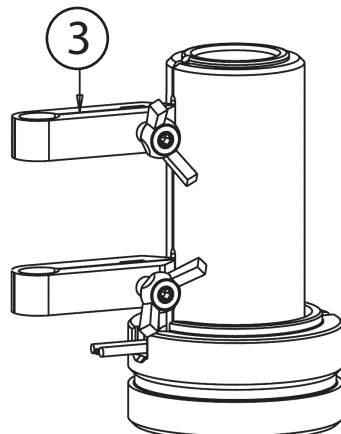
Nozzles / Ugelli		Disassembly tool for nozzles Attrezzo smontaggio ugelli Code / Codice
Ø	Type / Tipo	
11	F1-1B	E06798
16	FN/FNH 1T-1GLTT-1D 2T-2PT-2D-3T-3D	E18757
	FN/FNH 1D-1DLSA-1DLSLU-2DLSA2DLSLU-3BT	E18762
24	FN/FNH 1T-1GLTT2T-2PT-2D3T-3D	E18758
	FN/FNH 1BT-1D-1DLSA1DLSLU-2DLSA2DLSLU-3BT	E18763
32	FN/FNH 1T-2T-2PT-3T	E18759
	FN/FNH 1D-1DLSA1DLSLU-2D2DLSA-2DLSLU-3BT-3D	E18764
46	FN/FNH 1-2-2P-3	E18760
	FN/FNH 1D-1DLSA-1DLSLU-2D-2DLSA-2DLSLU-3B-3D	E18765
18	DN1-1B-1-3	E17824
22	DN1-1-2-3	E17825
	DN1B	E16099
30	DN1-1-2-3	E17826
	DN1B	E17827
44	DN1-2-3	E17828
	DN1B	E09623

The nozzle tip disassembly tool has to be used with a 3/8" drive sliding T-handle for DN Ø 18 - 22 - 30 - 44 / FN Ø11-16-24 and 1/2" drive sliding T-handle for FN Ø32-46, not provided by Thermoplay.

La chiave per smontaggio puntale deve essere utilizzata con quadro maschio 3/8" per DN Ø 18 - 22 - 30 - 44 / FØ11-16-24 e 1/2" per FØ32-46, non fornito dalla Thermoplay.

3 NOZZLE HEATER EXTRACTOR
ESTRATTORE RESISTENZA UGELLO

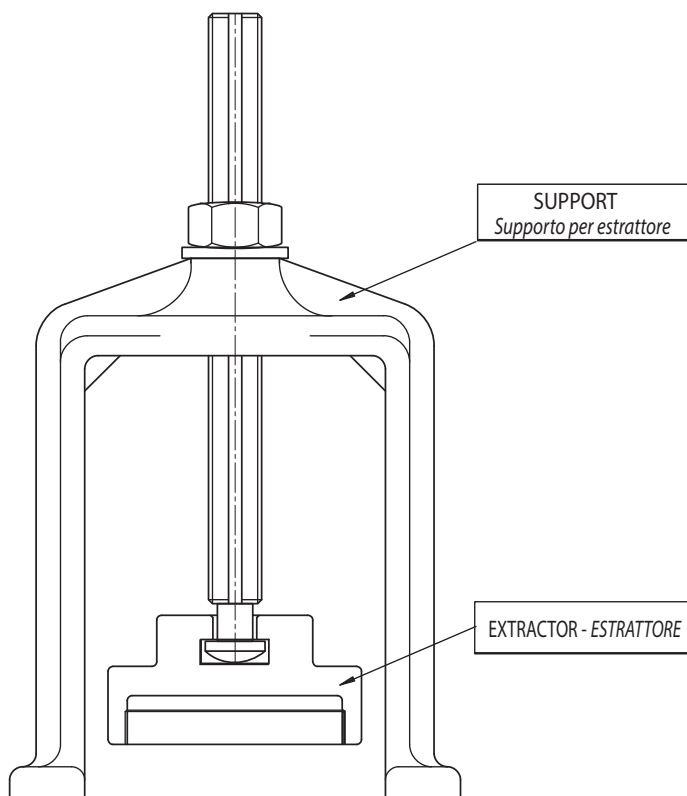
Code Codice
E09708





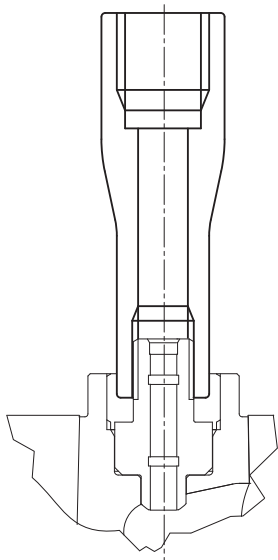
DISASSEMBLY TOOL FOR SHUT OFF VALVE
 ATTREZZO SMONTAGGIO GRUPPO OTTURAZIONE

Extractor <i>Estrattore</i>	Support <i>Supporto</i>	Shut-off valve <i>Gruppo otturazione</i>
E06590	E04198	E18326
E06591	E04197	E18329



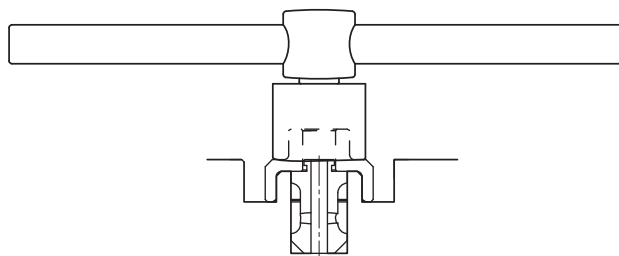
DISASSEMBLY TOOL FOR PIN GUIDE EXTRACTION
 TUBO ESTRAZIONE BOCCOLA GUIDASPILLO

Code <i>Codice</i>	Shut-off valve <i>Gruppo otturazione</i>
E18394	E18323 - E18324
	E18325 - E18326
	E18327 - E18500
	E18328 - E18329



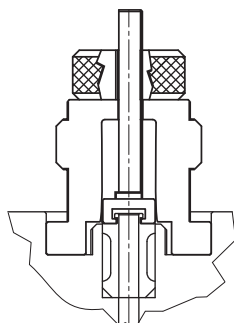
WRENCH FOR CLOSING AND OPENING THE RING NUT
 CHIAVE CHIUSURA ED APERTURA GHIERA

Code <i>Codice</i>	Nozzles / <i>Tipo ugelli</i>
E15777	F6/3-3D 16-24-32
E15778	F6/3-3D 46



GROUP FOR STANDARD PIN GUIDE EXTRACTION
 GRUPPO ESTRAZIONE BOCCOLA GUIDASPILLO

Code <i>Codice</i>	Nozzles / <i>Tipo ugelli</i>
E06543	F6/3-3D 16-24-32
E06545	F6/3-3D 46



GROUP FOR ORIENTATED PIN GUIDE EXTRACTION
 GRUPPO ESTRAZIONE BOCCOLA GUIDASPILLO ORIENTATO

Code <i>Codice</i>	Nozzles / <i>Tipo ugelli</i>
E06544	F6/3-3D 16-24-32
E06546	F6/3-3D 46

