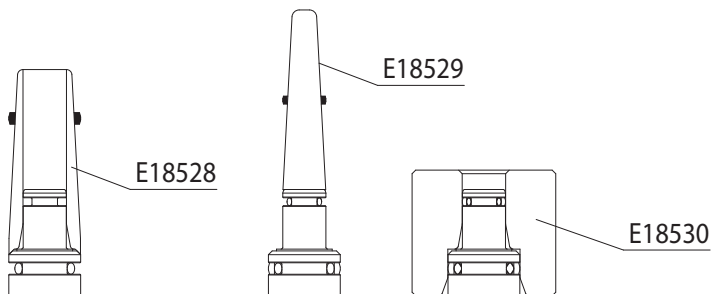


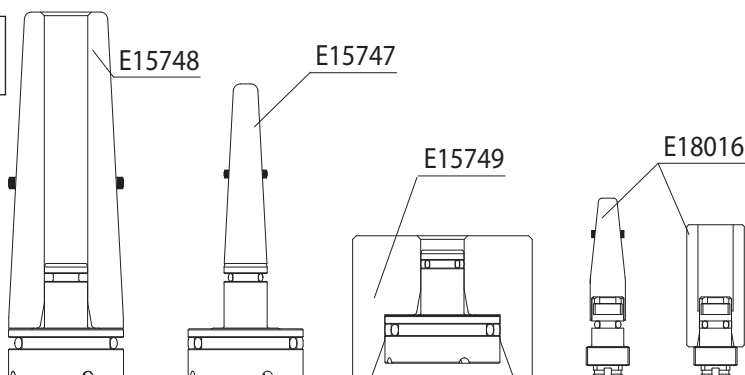


**ACCESSORIES FOR OR / ATTREZZI MONTAGGIO OR**

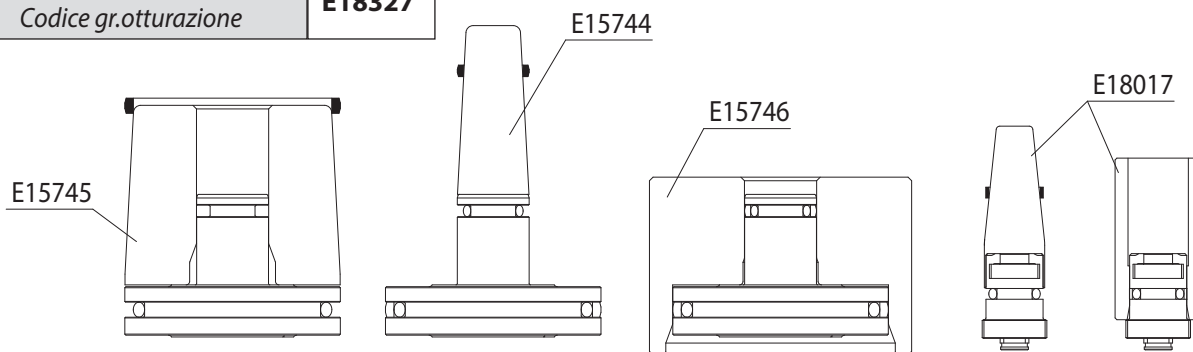
Shut off valve code  
Codice gr.otturazione **E18500**



Shut off valve code  
Codice gr.otturazione **E19399**

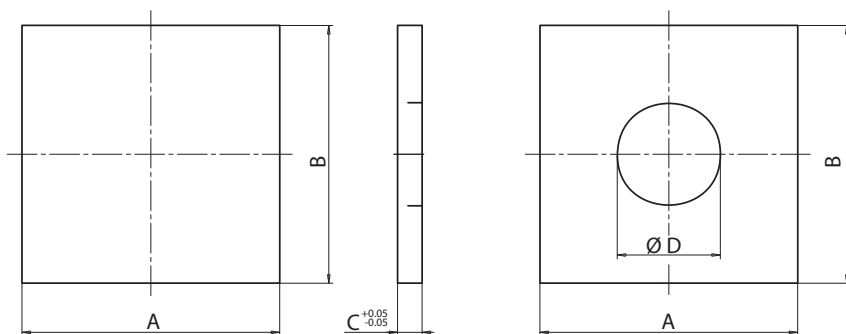


Shut off valve code  
Codice gr.otturazione **E18327**



**INSULATION PLATE / PIASTRE ISOLANTI**

Specify dimensions AxBxD with order / Specificare le dimensioni AxBxD all'ordine



Code codice	C*	Technical datas / Dati tecnici		
<b>E07099</b> AxBxD	6 mm	Compression resistance <i>Resistenza alla compressione</i>	a 20° C	350 N/mm <sup>2</sup>
			a 200° C	130 N/mm <sup>2</sup>
<b>E07100</b> AxBxD	8 mm	Temperature resistance / <i>Resistenza alla temperatura</i>		200° C
		Thermal conductivity / <i>Conducibilità termica</i>		0.13 W/m·k
		Specific gravity / <i>Peso specifico</i>		1.4 g/cm <sup>3</sup>
<b>E08307</b> AxBxD	12 mm	Water absorption / <i>Assorbimento umidità</i>		0.1
		Parallelism / <i>Parallelismo</i>		0.03 mm / 500 mm
		Material / <i>Materiale</i>		THERMOTHERM

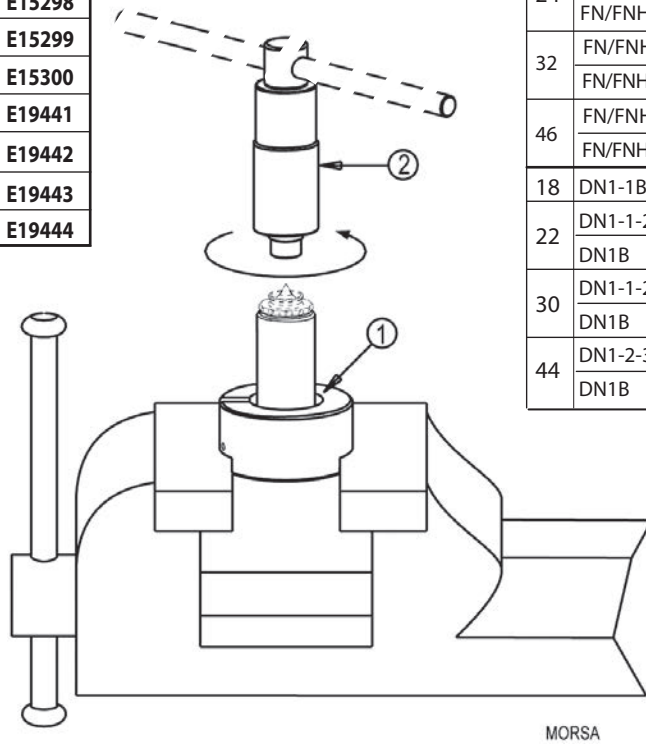
\* Other thickness on request / *Altri spessori a richiesta*



ACCESSORIES FOR NOZZLES FN AND DN / ACCESSORI PER UGELLI FN e DN

**1** DISASSEMBLY TOOL FOR NOZZLE TIP  
CHIAVE A BUSSOLA PER SMONTAGGIO PUNTALI

Nozzles Ugelli	Code Codice
FØ 11	<b>E06800</b>
DNØ 18	<b>E17814</b>
DNØ 22	<b>E17815</b>
DNØ 30	<b>E17816</b>
DNØ 44	<b>E17817</b>
FØ 16	<b>E15297</b>
FØ 24	<b>E15298</b>
FØ 32	<b>E15299</b>
FØ 46	<b>E15300</b>
FNHØ 16	<b>E19441</b>
FNHØ 24	<b>E19442</b>
FNHØ 32	<b>E19443</b>
FNHØ 46-60	<b>E19444</b>



**2** DISASSEMBLY TOOL FOR NOZZLES  
ATTREZZO SMONTAGGIO UGELLI

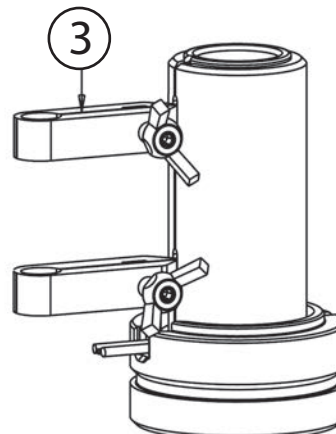
Nozzles / Ugelli		Disassembly tool for nozzles Attrezzo smontaggio ugelli Code / Codice
Ø	Type / Tipo	
11	F1-1B	<b>E06798</b>
16	FN/FNH 1T-1GLTT-1D 2T-2PT-2D-3T-3D	<b>E18757</b>
	FN/FNH 1D-1DLSA-1DLSU-2DLSA-2DLSU-3BT	<b>E18762</b>
24	FN/FNH 1T-1GLTT-2T-2PT-2D-3T-3D	<b>E18758</b>
	FN/FNH 1BT-1D-1DLSA-1DLSU-2DLSA-2DLSU-3BT	<b>E18763</b>
32	FN/FNH 1T-2T-2PT-3T	<b>E18759</b>
	FN/FNH 1D-1DLSA-1DLSU-2D-2DLSA-2DLSU-3BT-3D	<b>E18764</b>
46	FN/FNH 1-2-2P-3	<b>E18760</b>
	FN/FNH 1D-1DLSA-1DLSU-2D-2DLSA-2DLSU-3B-3D	<b>E18765</b>
18	DN1-1B-1-3	<b>E17824</b>
22	DN1-1-2-3	<b>E17825</b>
	DN1B	<b>E16099</b>
30	DN1-1-2-3	<b>E17826</b>
	DN1B	<b>E17827</b>
44	DN1-2-3	<b>E17828</b>
	DN1B	<b>E09623</b>

The nozzle tip disassembly tool has to be used with a 3/8" drive sliding T-handle for DN Ø 18 - 22 - 30 - 44 / FN Ø11-16-24 and 1/2" drive sliding T-handle for FN Ø32-46, not provided by Thermoplay.

La chiave per smontaggio puntale deve essere utilizzata con quadro maschio 3/8" per DN Ø 18 - 22 - 30 - 44 / FØ11-16-24 e 1/2" per FØ32-46, non fornito dalla Thermoplay.

**3** NOZZLE HEATER EXTRACTOR  
ESTRATTORE RESISTENZA UGELLO

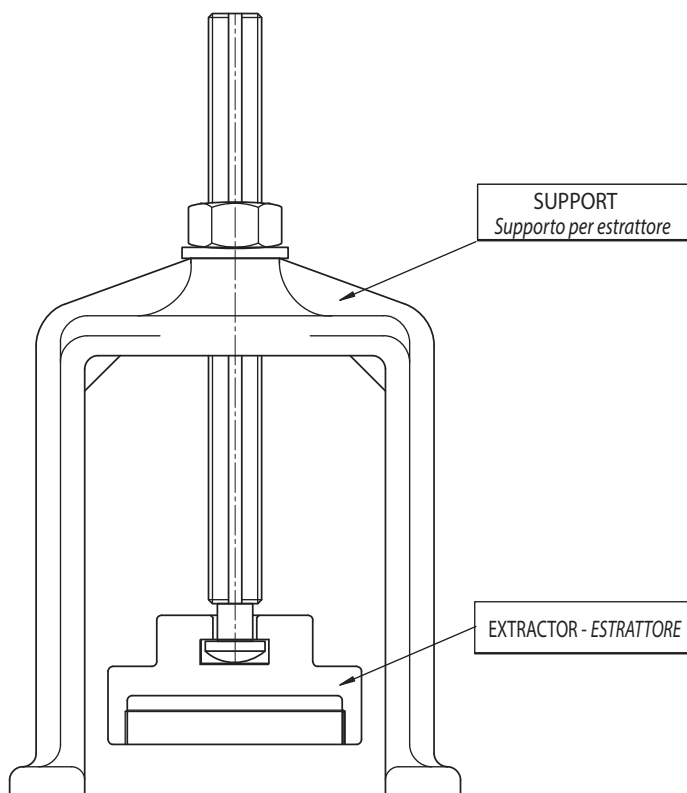
Code Codice
<b>E09708</b>





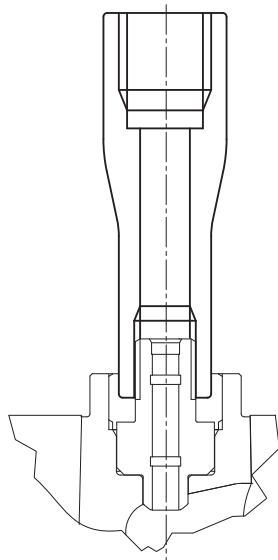
DISASSEMBLY TOOL FOR SHUT OFF VALVE  
ATTREZZO SMONTAGGIO GRUPPO OTTURAZIONE

Extractor <i>Estrattore</i>	Support <i>Supporto</i>	Shut-off valve <i>Gruppo otturazione</i>
<b>E06590</b>	<b>E04198</b>	E18326
<b>E06591</b>	<b>E04197</b>	E18329



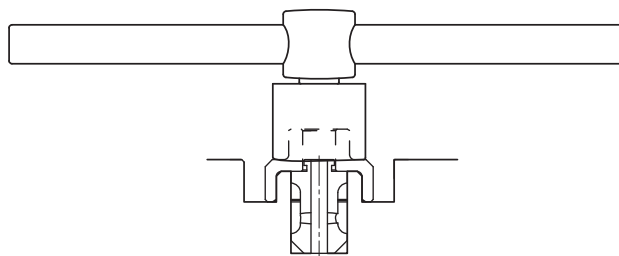
DISASSEMBLY TOOL FOR PIN GUIDE EXTRACTION  
TUBO ESTRAZIONE BOCCOLA GUIDASPILLO

Code <i>Codice</i>	Shut-off valve <i>Gruppo otturazione</i>
<b>E18394</b>	E18323 - E18324
	E18325 - E18326
	E18327 - E18500
	E18328 - E18329



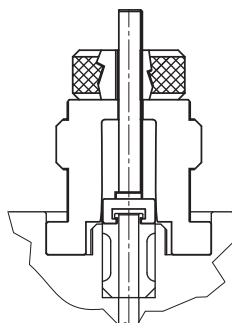
WRENCH FOR CLOSING AND OPENING THE RING NUT  
CHIAVE CHIUSURA ED APERTURA GHIERA

Code <i>Codice</i>	Nozzles / <i>Tipo ugelli</i>
<b>E15777</b>	F6/3-3D 16-24-32
<b>E15778</b>	F6/3-3D 46



GROUP FOR STANDARD PIN GUIDE EXTRACTION  
GRUPPO ESTRAZIONE BOCCOLA GUIDASPILLO

Code <i>Codice</i>	Nozzles / <i>Tipo ugelli</i>
<b>E06543</b>	F6/3-3D 16-24-32
<b>E06545</b>	F6/3-3D 46



GROUP FOR ORIENTATED PIN GUIDE EXTRACTION  
GRUPPO ESTRAZIONE BOCCOLA GUIDASPILLO ORIENTATO

Code <i>Codice</i>	Nozzles / <i>Tipo ugelli</i>
<b>E06544</b>	F6/3-3D 16-24-32
<b>E06546</b>	F6/3-3D 46

