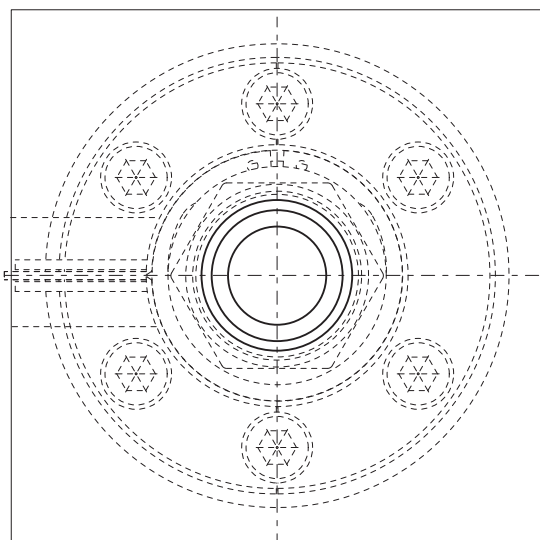
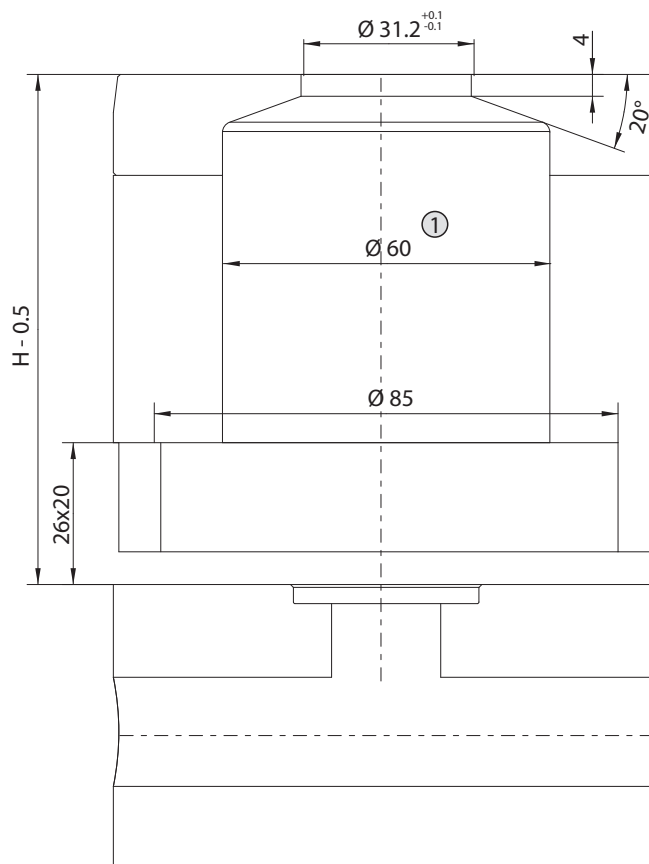
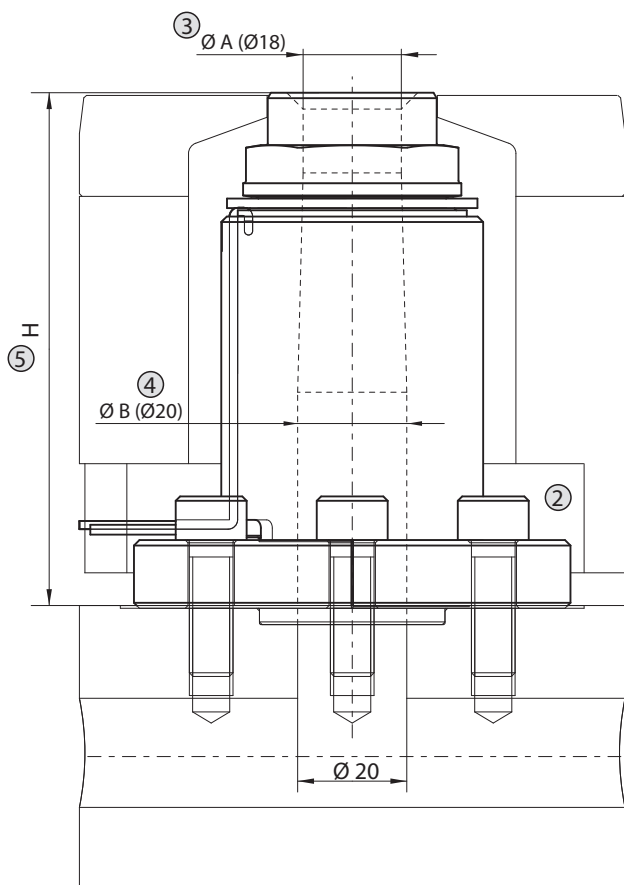
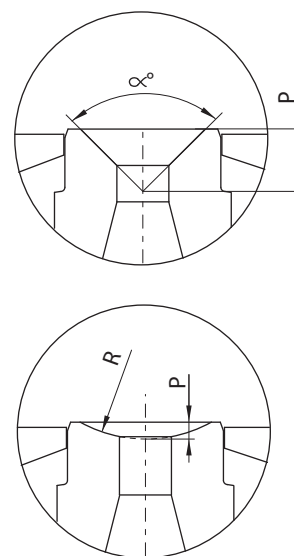




• Ø 60 FLANGED INJECTION BUSHING ON MANIFOLD / BOCCOLA DI INIEZIONE Ø 60 FLANGIATA SULLA CAMERA CALDA



Suffix Suffisso	R (6)	P
../R000	R 0	--
../R127	R 12.7	6
../R130	R 13	6
../R135	R 13.5	6
../R150	R 15	6
../R155	R 15.5	6
../R160	R 16	6
../R165	R 16.5	6
../R195	R 19.5	4
../R200	R 20	4
../R210	R 21	4
../R220	R 22	4
../R250	R 25	4
../R300	R 30	2.5
../R350	R 35	2.5
../R400	R 40	2.5
../A070	α° = 70°	18
../A090	α° = 90°	12
../A120	α° = 120°	7.5



Example of order / Esempio d'ordine

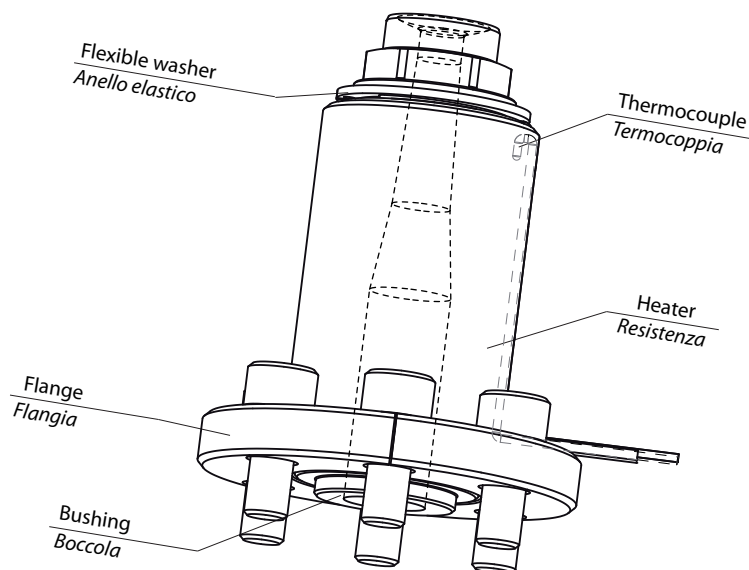
① ② ③ ④ ④ ⑤  
**E 6 0 F L 1 8 - 2 0 - 3 2 8 5 / R 1 5 5**

- ① **6 0** Bushing diameter / *Diametro boccola (Ø46 - Ø 60)*
- ② **F L** Type of bushing hot runner coupling / *Tipo di accoppiamento boccola canale caldo (AV - FL)*
- ③ **0 5** Bushing hole Ø A / *Foro boccola Ø A (Ø 18)*
- ④ **2 0** Bushing hole Ø B / *Foro boccola Ø B (Ø20 - Ø25)*
- ⑤ **3 2 8 5** Bushing height / *Altezza boccola (H=328.5)*
- ⑥ **R 1 5 5** Bushing radius / *Raggio boccola (R=15.5)*



• Ø 60 FLANGED INJECTION BUSHING ON MANIFOLD / BOCCOLA DI INIEZIONE Ø 60 FLANGIATA SULLA CAMERA CALDA

H ③		Heater code Codice resistenza	Watt	Thermocouple / Termocoppia ⑥		Flexible washer Anello elastico
from... da...	to... a...			grounded / a massa .. - JG	insulated / isolata .. - JU	
102	111.9	E18910	1285	E05505-F60	E16037-F60	E18748
112	121.9	E18911	1310			
122	131.9	E18912	1310			
132	141.9	E18913	1345			
142	151.9	E18914	1345			
152	161.9	E18915	1375			
162	171.9	E18916	1375	E15206-F60	E16771-F60	
172	181.9	E18917	1410			
182	191.9	E18918	1410			
192	201.9	E18919	1410			
202	211.9	E18920	1445			
212	221.9	E18921	1445			
222	231.9	E18922	1480	E15223-F60	E16772-F60	
232	241.9	E18923	1480			
242	251.9	E18924	1510			
252	261.9	E18925	1510			
262	271.9	E18926	1545			
272	281.9	E18927	1545			
282	291.9	E18928	1580	E15224-F60	E16773-F60	
292	301.9	E18929	1580			
302	311.9	E18930	1615			
312	321.9	E18931	1615			
322	331.9	E18932	1650			
332	341.9	E18933	1650			
342	351.9	E18934	1650	E15225-F60	E16774-F60	
352	361.9	E18935	1650			
362	371.9	E18936	1650			
372	381.9	E18937	1650			
382	391.9	E18938	1650			



Suffix Suffisso ⑤	Description Descrizione
.. - JG	Grounded thermocouple with J type calibration Termocoppia ugello a massa tipo J
.. - JU	Insulated thermocouple with J type calibration Termocoppia ugello isolata tipo J

cables / Cavi	HEATER / RESISTENZA	
	White / Red-White Bianco / Rosso-Bianco	230 V
	THERMOCOUPLE / TERMOCOPPIA	
	Red / Rosso	TC+
	Blue / Blu	TC-