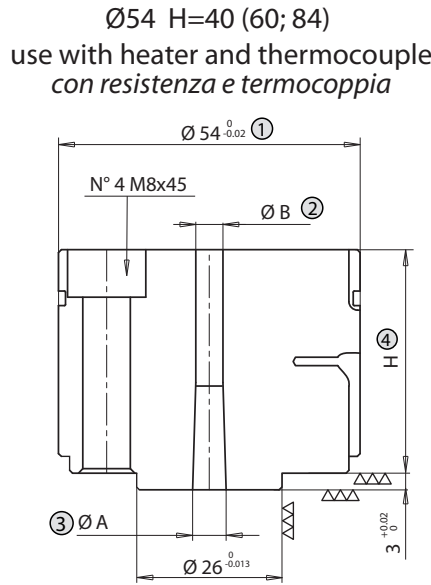
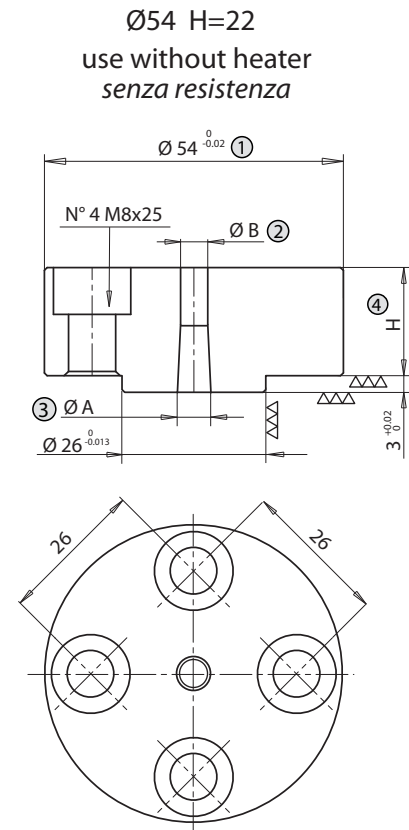
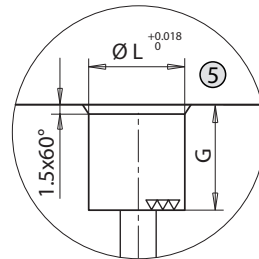
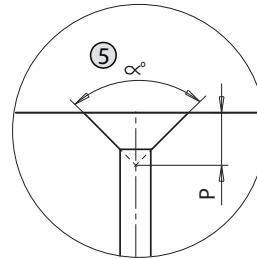
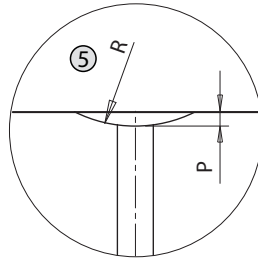
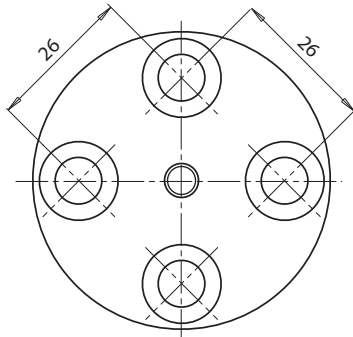
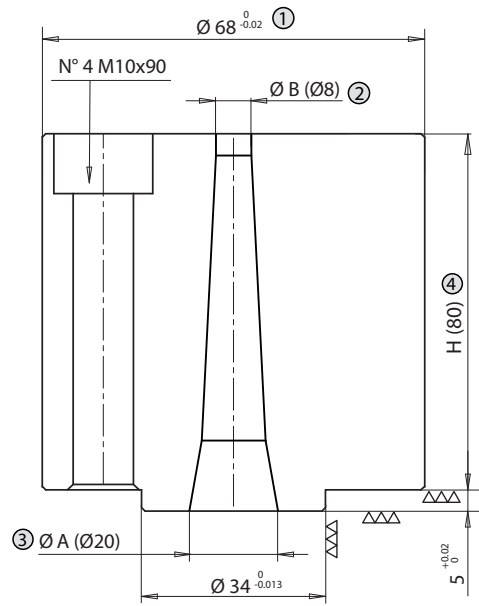




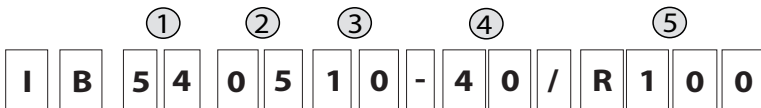
• INJECTION BUSHING / BOCCOLE DI INIEZIONE



Ø68 H=80
use with heater and thermocouple
con resistenza e termocoppia



Example of order / Esempio d'ordine



- ① 5 4 Bushing diameter / *Diametro boccola (Ø54 - Ø68)*
- ② 0 5 Bushing hole Ø B always smaller or equal to ØA
Foro boccola Ø B sempre più piccolo o uguale a ØA (Ø5 - Ø7 - Ø8)
- ③ 1 0 Bushing hole Ø A always bigger or equal to ØB
Foro boccola ØA sempre più grande o uguale a ØB (Ø6 - Ø8 - Ø10 - Ø12 - Ø15)
- ④ 4 0 Bushing height / *Altezza boccola (H=22-40-60-80-84)*
- ⑤ R 1 0 0 Bushing radius / *Raggio boccola (R=10)*

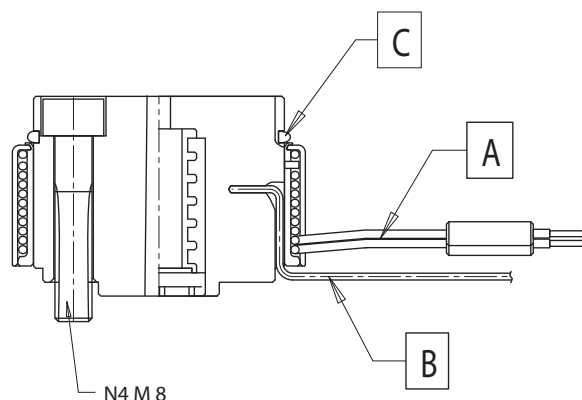
⑤ Suffix Suffisso	R	P
../R000	R 0	-
../R095	R 9.5	3
../R100	R 10	3
../R105	R 10.5	3
../R110	R 11	3
../R127	R 12.7	3
../R130	R 13	2
../R135	R 13.5	2
../R150	R 15	2
../R155	R 15.5	2
../R160	R 16	2
../R165	R 16.5	2
../R195	R 19.5	2
../R200	R 20	1
../R210	R 21	1
../R220	R 22	1
../R250	R 25	1
../R300	R 30	1
../R350	R 35	1
../R400	R 40	1
../A070	α°= 70°	7
../A090	α°= 90°	6
../A120	α°= 120°	5
../16x14	ØL=14	G=16
../16x16	ØL=16	G=16

• HEATERS AND THERMOCOUPLES / RESISTENZE E TERMOCOPPIE

① Ø	④ H	Resistenza Heater	Grounded thermocouple Termocoppia a massa	Termocoppia isolata Insulated thermocouple
54	22	--	--	--
54	40	E09053	E07033	E16035
54	60	E09056	E05505	E16037
54	84	E09059	E05505	E16037
68	80	E05297	Heater with grounded thermocouple included <i>Resistenza con termocoppia a massa inclusa</i>	

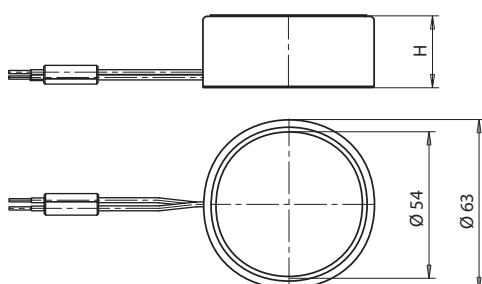


• INJECTION BUSHING HEATING UNIT / GRUPPO RISCALDANTE BOCCOLA INIEZIONE



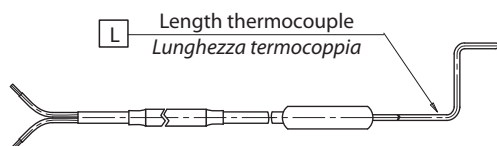
cables / cavi	HEATER / RESISTENZA	
	White / Red White Bianco / Rosso-Bianco	230 V
	THERMOCOUPLE / TERMOCOPPIA	
	Red / Rosso	TC+
Blue / Blu	TC-	

A • HEATER / RESISTENZA



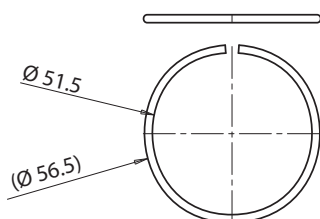
Code Codice	DESCRIPTION / DESCRIZIONE	H
E09053	Heater band for injection bushing height 40 mm 650 W 240 Volt <i>Fascia riscaldante per boccola alta 40 mm 650 W 240 Volt</i>	26
E09056	Heater band for injection bushing height 60 mm 700 W 240 Volt <i>Fascia riscaldante per boccola alta 60 mm 700 W 240 Volt</i>	46
E09059	Heater band for injection bushing height 80 mm 700 W 240 Volt <i>Fascia riscaldante per boccola alta 80 mm 700 W 240 Volt</i>	70

B • THERMOCOUPLE / TERMOCOPPIA



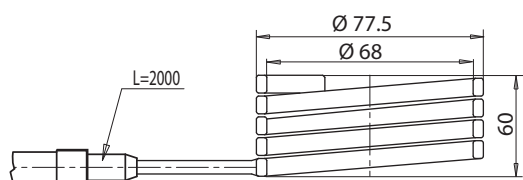
Code Codice	DESCRIPTION / DESCRIZIONE	L
E07033	Grounded thermocouple with J type calibration, length cable 2 m <i>Termocoppia a massa tipo J lunghezza cavi 2 m</i>	60
E05505		150
E16035	Insulated thermocouple with J type calibration, length cable 2 m <i>Termocoppia isolata tipo J lunghezza cavi 2 m</i>	60
E16037		150

C • SEAL RING FOR INJECTION BUSHING / ANELLO DI TENUTA



Code Codice	DESCRIPTION / DESCRIZIONE
E09052	Seal ring / Anello di tenuta

• HEATER Ø 68 with thermocouple / RESISTENZA Ø 68 con termocoppia



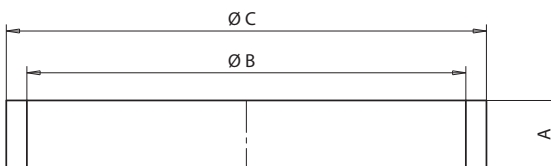
Code Codice	DESCRIPTION / DESCRIZIONE
E05297	Heater Ø 68 high 60 mm 1000 W 230 Volt <i>Resistenza Ø 68 alta 60 mm 1000 W 230 Volt</i>



• SPACER FOR SEAL RING / DISTANZIALE PER ANELLO DI TENUTA

Material : Stainless steel / Materiale : acciaio inox

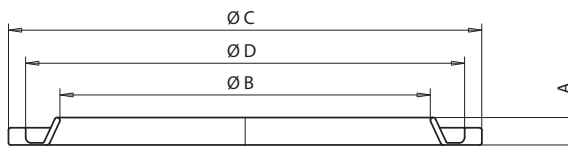
Code/cod.	A	B	C
E04901	10	64	70
E04902	20		
E04903	30		
E04904	40		
E04905	50		



SEAL RING FOR INJECTION BUSHING / ANELLO DI TENUTA PER BOCCOLA DI INIEZIONE

Material : Stainless steel / Materiale : acciaio inox

Code/cod.	A	B	C	D
E02923	4	54	69	64
E05020		68	89	78



E05020 to be employed for nozzle DN6/3Ø44 and injection bushing E05272-E05273-E05274
E05020 da utilizzare per ugello DN6/3 Ø 44 e boccola iniezione E05272-E05273-E05274

Code cod.	DESCRIPTION / DESCRIZIONE	Part / Parte
E04901	Spacer for seal ring Distanziale per anello di tenuta	A
E04902		
E04903		
E04904		
E04905		
E02923	Seal ring for injection bushing / Anello di tenuta per boccola d'iniezione	B
E05020		
E09052	Seal ring for heater band / Anello di tenuta per fascia	C
E09053	Heater band / Fascia riscaldante	D
E09056		
E09059		
E05505	Thermoelement / Termocoppia	E
E05506		

SEAT FOR INJECTION BUSHING / SEDE PER BOCCOLA DI INIEZIONE

